

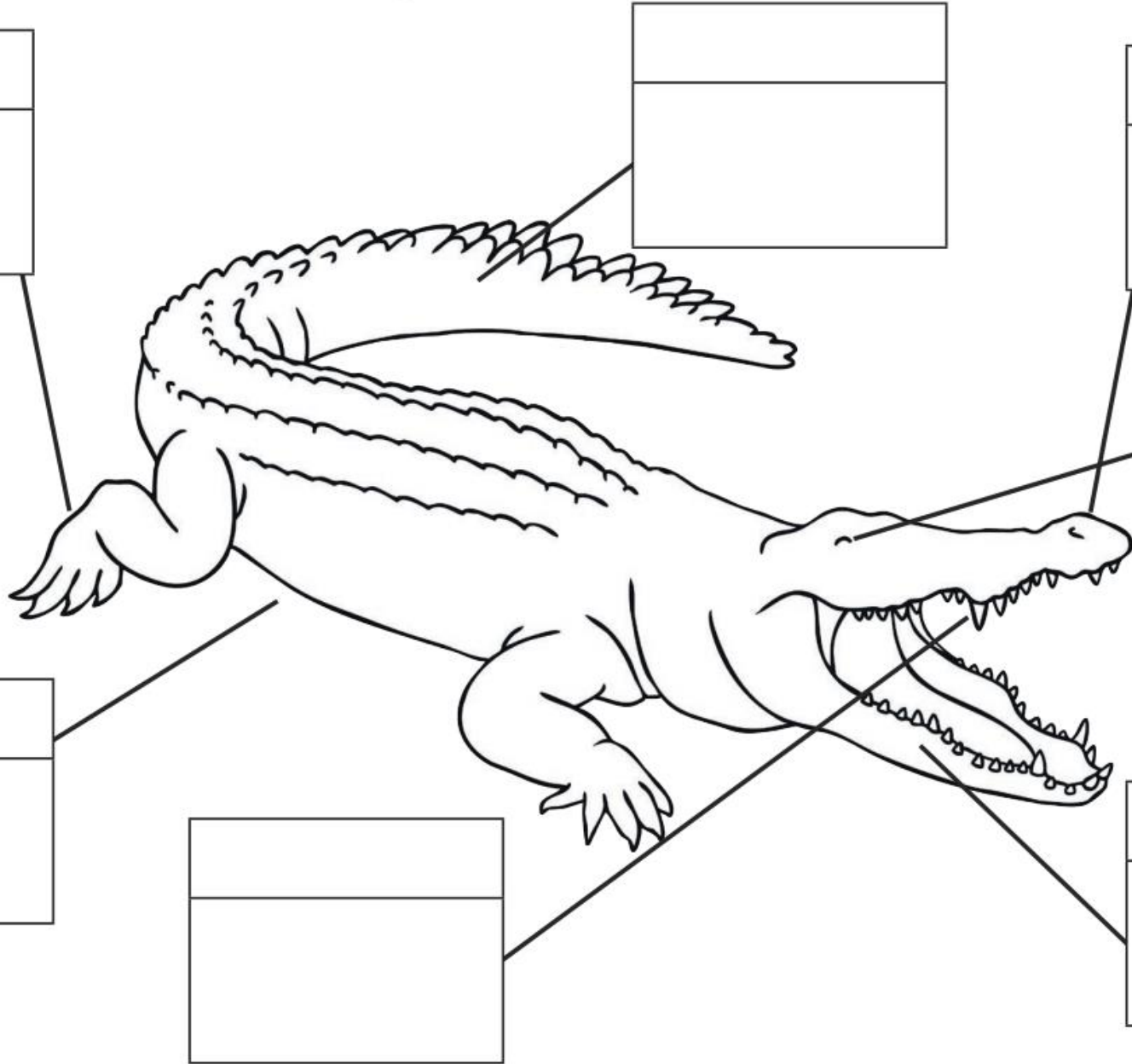
# Parts of Australian Animals

body part
description









**Parts of Australian Animals - Saltwater Crocodile**

<p>The saltwater crocodile uses these to see its prey.</p> <p><small>twinkl.co.uk</small></p>	<p>Saltwater crocodiles have 66 of these in their jaws. They are very sharp.</p>	<p>The saltwater crocodile uses these to hold firmly onto their prey.</p>	<p>These are very short and to the side of the body.</p>
<p><b>legs</b></p>	<p><b>snout</b></p>	<p><b>tail</b></p>	<p><b>body</b></p>
<p>The saltwater crocodile is the largest reptile in the world.</p>	<p>The saltwater crocodile opens the nostrils at the end of this to breathe when it is in water.</p>	<p>The saltwater crocodile uses this to propel itself through the water quickly.</p>	
<p><b>teeth</b></p>	<p><b>eyes</b></p>	<p><b>jaws</b></p>	